

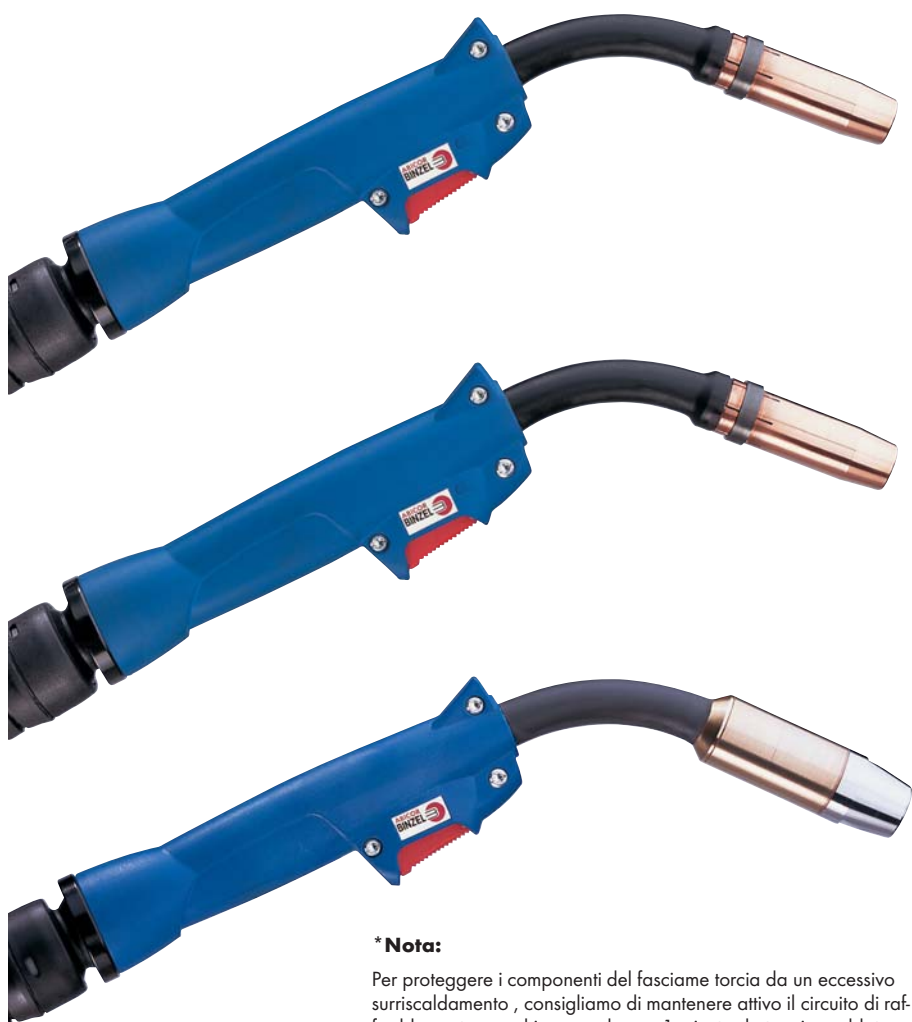
# Torçe MIG/MAG "ABIMIG®" a liquido

## Duty Cycle da 300 A fino a 600 A

Le oramai conosciute torçe MIG/MAG della serie ABIMIG® in grado di coprire una gamma di utilizzo fino a 600A . L'impugnatura ABIMIG® può essere utilizzata e integrata con i principali moduli di controllo e funzioni saldatura.

- Doppio circuito di raffreddamento per un maggior raffreddamento ed una maggior durata delle parti consumabile.
- Gamma di utilizzo fino a 600A - eccellenti performance in saldatura ad arco pulsato
- Tecnicamente testata - affidabile al 100%

- ABIMIG® 452 con parti di ricambio tipo MB 401/501 meno stock .
- ABIMIG® 645 con ugello gas filettato e camera di raffreddamento rimovibile , per un raffreddamento ed una copertura gas ottimali - massimo risultato anche in condizioni di utilizzo estreme.
- Cambio torcia rapido grazie al connettore centralizzato ABICOR BINZEL .



**\*Nota:**

Per proteggere i componenti del fasciame torcia da un eccessivo surriscaldamento , consigliamo di mantenere attivo il circuito di raffreddamento macchina per almeno 1 minuto da termine saldatura.

**ABIMIG® 452 D W\***

**Dati tecnici (EN 60 974-7):**

Classificazione: 450 A DC  
300 A Pulsato  
Miscela Gas M21  
(DIN EN 439)

Duty cycle: 100%

Diametro filo: 0.8 - 1.6 mm

**ABIMIG® 452 W\***

**Dati tecnici (EN 60 974-7):**

Classificazione: 500 A DC  
325 A Pulsato  
Miscela Gas M21  
(DIN EN 439)

Duty cycle: 100%

Diametro filo: 0.8 - 1.6 mm

**ABIMIG® 645 W\***

**Dati tecnici (EN 60 974-7):**

Classificazione: 600 A DC  
450 A Pulsato  
Miscela Gas M21  
(DIN EN 439)

Duty cycle: 100%

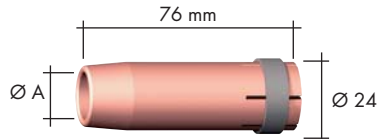
Diametro filo: 0.8 - 1.6 mm

Torçe complete Modello	Impugnatura	n° cod.			Mod.	Lancia n° cod.
		3 m	4 m	5 m		
ABIMIG® 452 D W	Type AM	766.0400	766.0401	766.0402	50°	766.0350
ABIMIG® 452 W	Type AM	766.0412	766.0413	766.0414	50°	766.0390
ABIMIG® 645 W	Type AM	766.0406	766.0407	766.0408	50°	766.0370

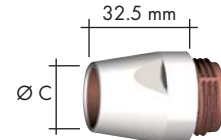
# ABIMIG® 452, ABIMIG® 645

## Consumabili

### ABIMIG® 452 D W ABIMIG® 452 W



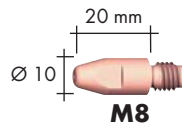
### ABIMIG® 645 W



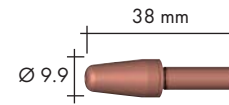
## Ugelli gas (10 pcs.)

	Ø A		Ø B	
Cilindrico	Ø 20	145.0051	Ø 19	766.1075 (1 pc.)
Conico	Ø 16	145.0085	Ø 16	766.1074 (1 pc.)
Conico	Ø 14	145.0132	-	-

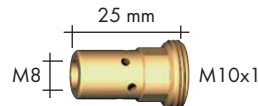
## Ug.p.corr. (10 pcs.)



**M8**

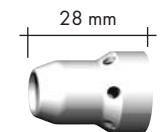


E-Cu	Ø 0.8	140.0114	-
	Ø 1.0	140.0313	-
	Ø 1.2	140.0442	-
	Ø 1.6	140.0587	-
E-Cu per Al	Ø 0.8	141.0003	-
	Ø 1.0	141.0008	-
	Ø 1.2	141.0015	-
	Ø 1.6	141.0022	-
CuCrZr	Ø 0.8	140.0117	140.1310
	Ø 1.0	140.0316	140.1312
	Ø 1.2	140.0445	140.1313
	Ø 1.6	140.0590	140.1315



## Supp.ug.p.corr. / Supp. "click" (10 pcs.)

Supp.ug.p.corr. M8	142.0022 (solo per versione D)	-
Supporto "click"	-	766.1051



## Diffusore gas (10 pcs.)

Standard	030.0145	766.1095
Lunga durata	030.0037	766.1078
Ceramico	030.0190	766.1135
Ceramico L / Adattatore	-	-

## Guaine

### per 3 m

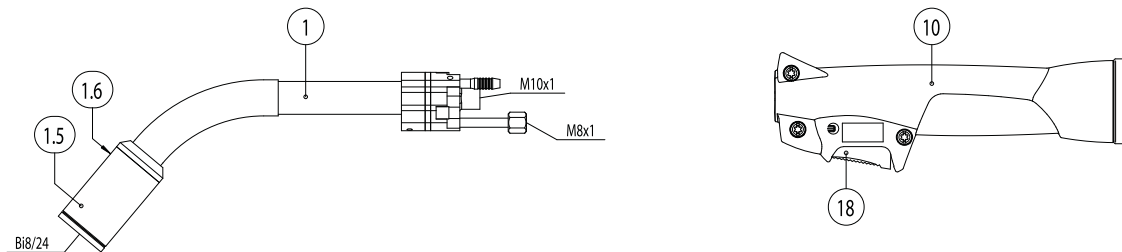
### per 4 m

### per 5 m



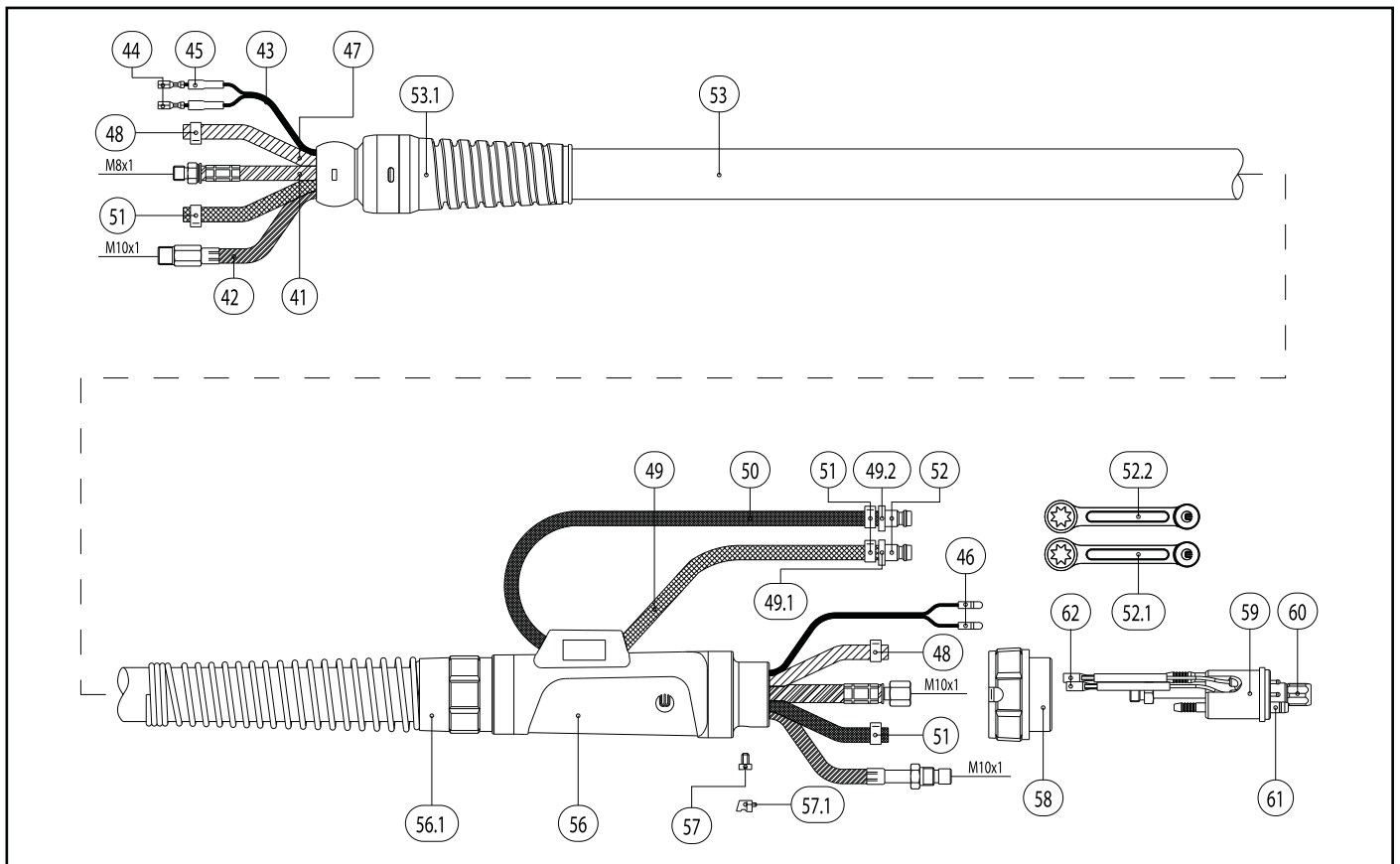
Guaine	Ø 0.8	124.0137	124.0138	124.0139
	Ø 1.0	124.0111	124.0112	124.0113
	Ø 1.2	124.0111	124.0112	124.0113
	Ø 1.6	124.0114	124.0115	124.0116
Guaine PTFE	Ø 0.8	126.0005	126.0008	126.0011
	Ø 1.0	126.0021	126.0026	126.0028
	Ø 1.2	126.0021	126.0026	126.0028
	Ø 1.6	126.0039	126.0042	126.0045
Guaine grafite PTFE	Ø 0.8	127.0002	127.0003	127.0004
	Ø 1.0	127.0005	127.0007	127.0008
	Ø 1.2	127.0005	127.0007	127.0008
	Ø 1.6	127.0010	127.0012	127.0013

# MIG/MAG Welding Torches ABIMIG® 645 W



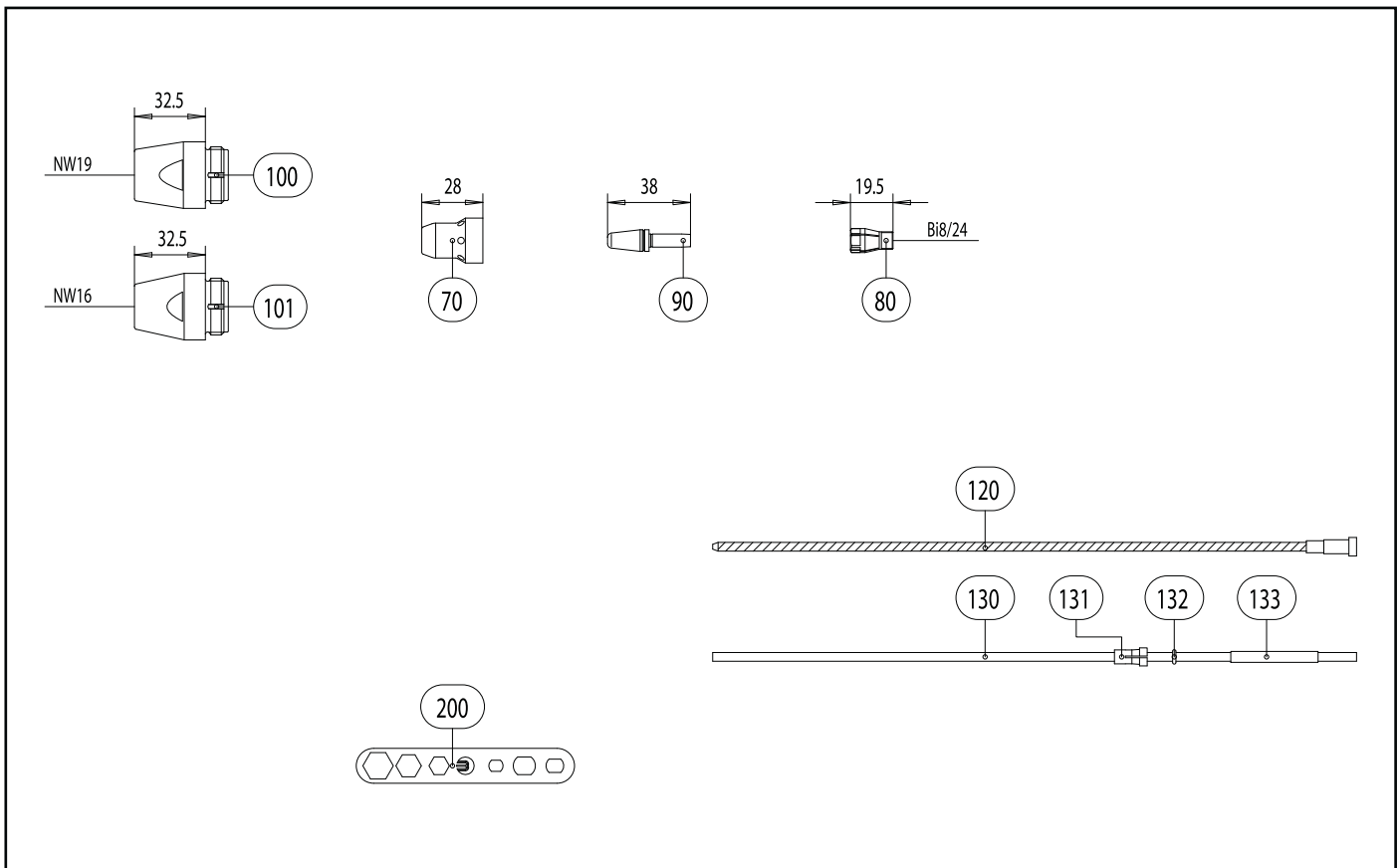
Pos.	Description	Units	Part-No.	Product-group
<b>Torch</b>				
	ABIMIG® 645 W; central adaptor WZ-2; 3.00 m (socket joint)		766.0406	1346
	ABIMIG® 645 W; central adaptor WZ-2; 4.00 m (socket joint)		766.0407	1346
	ABIMIG® 645 W; central adaptor WZ-2; 5.00 m (socket joint)		766.0408	1346
<b>Swan neck</b>				
1	Swan neck ABIMIG® 645W; 50° bent		766.0370	1309
1.5	Cooling jacket cpl.		766.0377	1395
1.6	O-Ring 18x1.5	20 Pcs.	165.0016	9010
<b>Handle</b>				
10	Handle ABIMIG® with trigger cpl.		180.0111	1395
18	Trigger 2-pole		185.0031	9010
<b>Cable assembly</b>				
41	Power cable MB ERGO / MB GRIP / ABIMIG® (RBH) for 3.00 m		115.0065	1012
41	Power cable MB ERGO / MB GRIP / ABIMIG® (RBH) for 4.00 m		115.0070	1012
41	Power cable MB ERGO / MB GRIP / ABIMIG® (RBH) for 5.00 m		115.0074	1012
42	Wire conduit MB ERGO / ABIMIG® cpl. red (up to wire Ø 1.2) for 3.00 m		156.0019	1012
42	Wire conduit MB ERGO / ABIMIG® cpl. red (up to wire Ø 1.2) for 4.00 m		156.0023	1012
42	Wire conduit MB ERGO / ABIMIG® cpl. red (up to wire Ø 1.2) for 5.00 m		156.0026	1012
42	Wire conduit MB ERGO / ABIMIG® cpl. blue (wire Ø 1.6 onwards) for 3.00 m		155.0008	1012
42	Wire conduit MB ERGO / ABIMIG® cpl. blue (wire Ø 1.6 onwards) for 4.00 m		155.0009	1012
42	Wire conduit MB ERGO / ABIMIG® cpl. blue (wire Ø 1.6 onwards) for 5.00 m		155.0010	1012
43	Control cable 2-pole	200 m	100.0019	4050
44	Trigger wire connector	20 Pcs.	175.0022	9010
45	Insulating sleeve	20 Pcs.	400.0119	1095
46	Plug	20 Pcs.	175.0004	9010
47	Hose 30 black Ø 4.9x1.5	100 m	109.0040	4050

# MIG/MAG Welding Torches ABIMIG® 645 W



Pos.	Description	Units	Part-No.	Product-group
48	Hose clamp Ø 8.7 mm	100 Pcs.	171.0002	9010
49	Hose 42 RBH black; Ø 5.5x1.5	40 m	109.0052	4050
49.1	Code colour ring blue	20 Pcs.	501.2167	9010
49.2	Code colour ring red	20 Pcs.	501.2166	9010
50	Hose 46 black Ø 5.5x1.5 cpl. with plug nipple ND 5; 0.6 m		103.0108	1095
51	Hose clamp Ø 9.5 mm with ring (mark 10.0)	100 Pcs.	173.0002	9010
52	Plug nipple ND 5 mm / Ø 6.0 mm	20 Pcs.	501.0114	9010
52.1	Fastener cap red	20 Pcs.	501.2423	1095
52.2	Fastener cap blue	20 Pcs.	501.2424	1095
53	Outer cover Ø 25x1.5	40 m	107.0004	4050
53.1	Socket joint cpl.		400.0949	1095
56	Cable support machine side big cpl. ND 31		500.0342	9010
56	Cable support machine side		501.2379	9010
56	Hose guide		500.0334	9010
56.1	Connecting set machine side for ND 29		501.2236	9010
56.1	Cable support spring		500.0233	9010
56.1	Biclip inside		400.0328	9010
56.1	Biclip outside		400.0329	9010
57	Pan head screw M4x6	20 Pcs.	000.0552	9010
57.1	Screw cap 1	20 Pcs.	500.0251	9010
58	Adaptor nut M33x2		500.0213	9010
59	Central adaptor WZ-2		766.0501	1395
59.1	Central adaptor WZ-2		766.0501	1395
60	Coupling nut M10x1	10 Pcs.	501.0082	9010
61	O-Ring 4x1	20 Pcs.	165.0002	9010
62	Trigger wire connector; female	20 Pcs.	175.0003	9010

# MIG/MAG Welding Torches ABIMIG® 645 W



Pos.	Description	Units	Part-No.	Product-group
<b>Wear parts</b>				
70	Gas diffuser, white	10 Pcs.	766.1095	1332
70	Gas diffuser, long life	10 Pcs.	766.1078	1332
70	Gas diffuser, ceramic	10 Pcs.	766.1135	1332
80	Collet body	10 Pcs.	766.1051	1333
90	Contact tip CuCrZr; Ø 1.0 (9.9x38)	10 Pcs.	140.1312	1031
90	Contact tip CuCrZr; Ø 1.2 (9.9x38)	10 Pcs.	140.1313	1031
90	Contact tip CuCrZr; Ø 1.6 (9.9x38)	10 Pcs.	140.1315	1031
100	Gas nozzle; cylindrical; ND Ø 19.0	2 Pcs.	766.1075	1337
101	Gas nozzle; conical; ND Ø 16.0	2 Pcs.	766.1074	1337
120	Guide spiral liner insulated; 2.0/4.5; red; for wire Ø 1.0 - 1.2; for 3.00 m		124.0111	1334
120	Guide spiral liner insulated; 2.0/4.5; red; for wire Ø 1.0 - 1.2; for 4.00 m		124.0112	1334
120	Guide spiral liner insulated; 2.0/4.5; red; for wire Ø 1.0 - 1.2; for 5.00 m		124.0113	1334
120	Guide spiral liner insulated; 2.5/4.5; yellow; for wire Ø 1.6; for 3.00 m		124.0114	1334
120	Guide spiral liner insulated; 2.5/4.5; yellow; for wire Ø 1.6; for 4.00 m		124.0115	1334
120	Guide spiral liner insulated; 2.5/4.5; yellow; for wire Ø 1.6; for 5.00 m		124.0116	1334
130	PTFE core liner 2.0/4.0; red; wire electrode Ø 1.0 - 1.2; for 3.00 m		126.0021	1034
130	PTFE core liner 2.0/4.0; red; wire electrode Ø 1.0 - 1.2; for 4.00 m		126.0026	1034
130	PTFE core liner 2.0/4.0; red; wire electrode Ø 1.0 - 1.2; for 5.00 m		126.0028	1034
130	PTFE core liner 2.7/4.7; yellow; wire electrode Ø 1.6; for 3.00 m		126.0039	1034
130	PTFE core liner 2.7/4.7; yellow; wire electrode Ø 1.6; for 4.00 m		126.0042	1034
130	PTFE core liner 2.7/4.7; yellow; wire electrode Ø 1.6; for 5.00 m		126.0045	1034
130	Plastic core liner; 2.0; petrol; for wire Ø 1.0 - 1.2; for 3.00 m		126.0069	1334
130	Plastic core liner; 2.0; petrol; for wire Ø 1.0 - 1.2; for 4.00 m		126.0070	1334
130	Plastic core liner; 2.0; petrol; for wire Ø 1.0 - 1.2; for 5.00 m		126.0071	1334
130	Plastic core liner; 2.4; petrol; for wire Ø 1.6; for 3.00 m		126.0072	1334

